

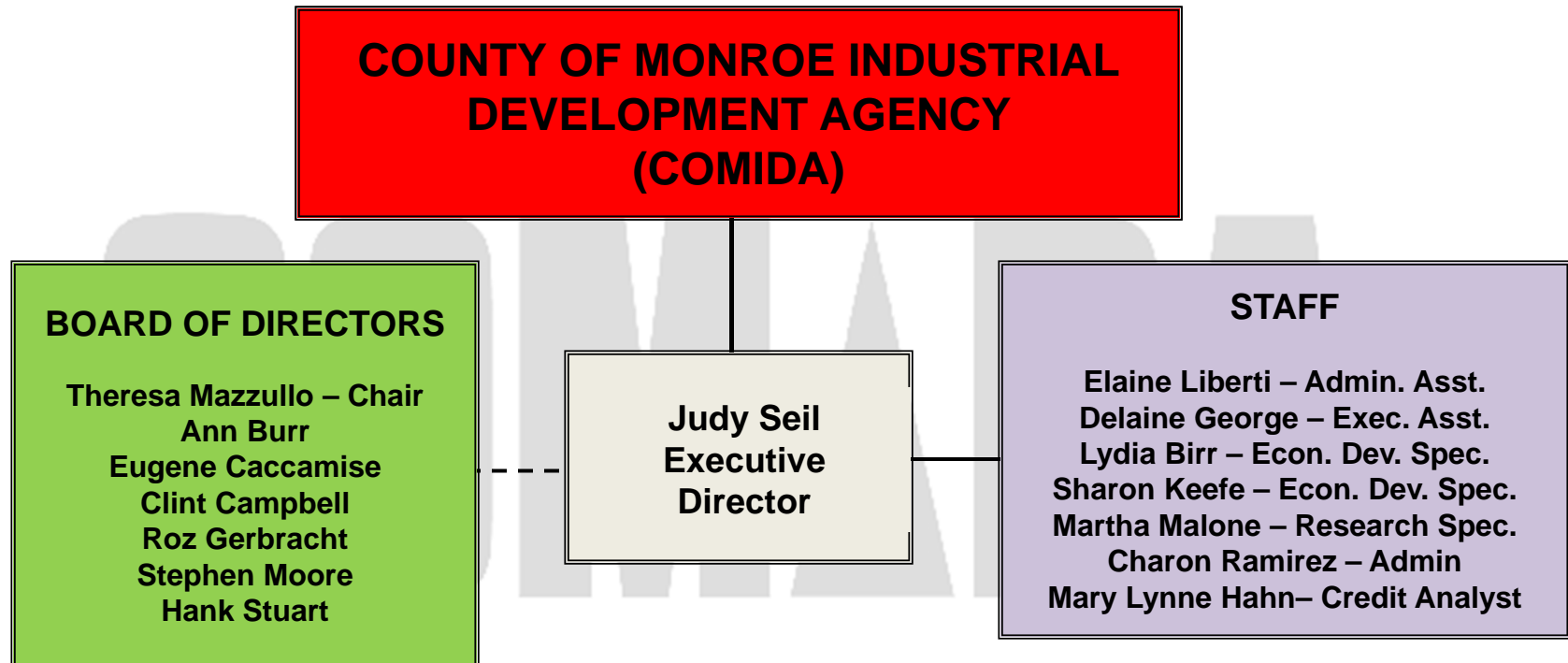


ANNUAL REPORT 2012



Maggie Brooks
County Executive

ORGANIZATION



PROJECTS AND INVESTMENTS

	2011	2012
Projects	39	37
Investment	\$482 million	\$266 million
Jobs Retained	2,077	1,501
Jobs to be Created	528	1,420

BENEFITS TO INCENTIVES 2012

Benefits

Incentives

Ratio

\$114 million

\$15 million

5:1

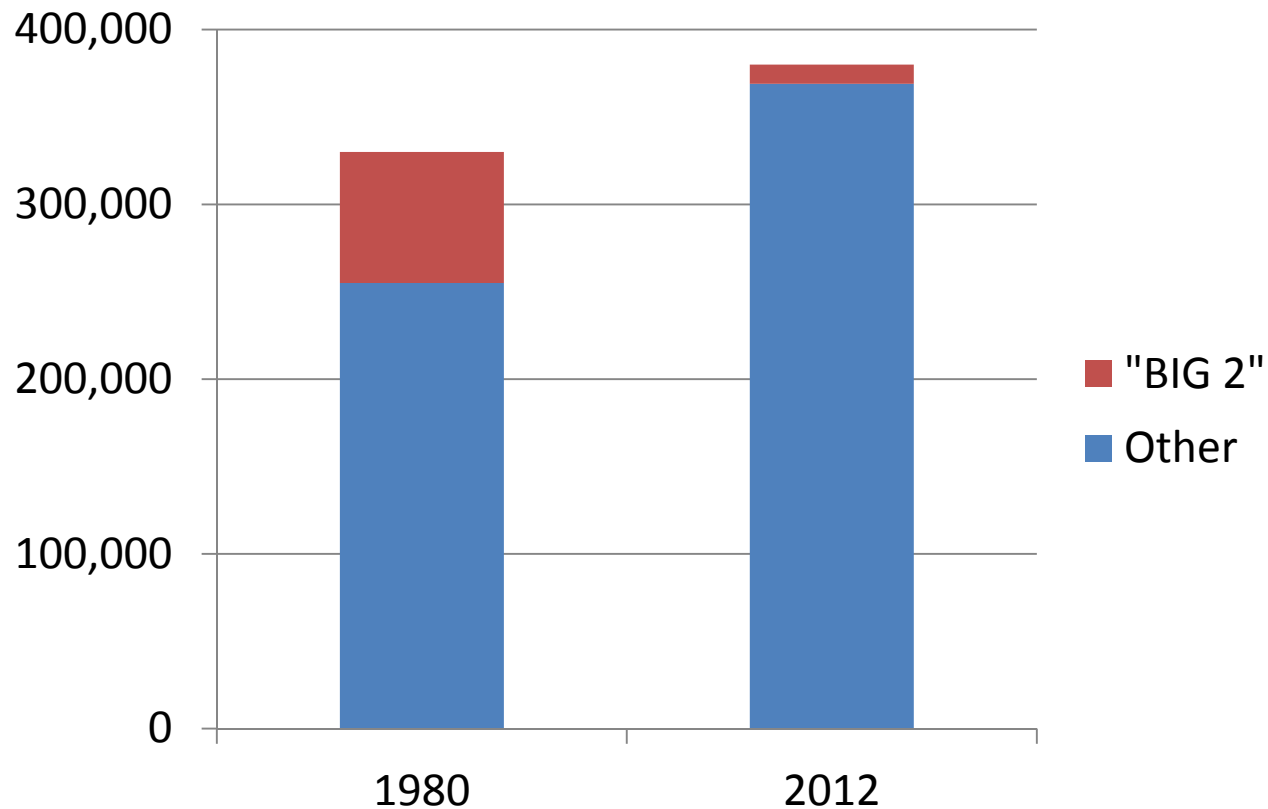


AREA EMPLOYMENT FACTS 2012

- ✓ In 1980, Monroe County employs 330,000
75,000 were employed by the Counties two
largest employers
- ✓ In 2012, Monroe County employs 380,000
At those same two companies, 11,000 are
employed.

AREA EMPLOYMENT FACTS 2012

- Total Employment



COMIDA HELPS SMALL BUSINESS

- **Over 97% of local companies employ under 100 people**
- **More than 50% of employment comes from companies with under 100 employees**
- **Since 2004, COMIDA has assisted more 402 projects; 80% of those companies employed less than 100 people**
- **New programs targeted to small business:**
 - **Expanded Local Labor to 100%**
 - **Monroe Manufactures Jobs**
 - **Manufacturing Rewards**
 - **Great Programs**
 - **The Entrepreneurs Network**

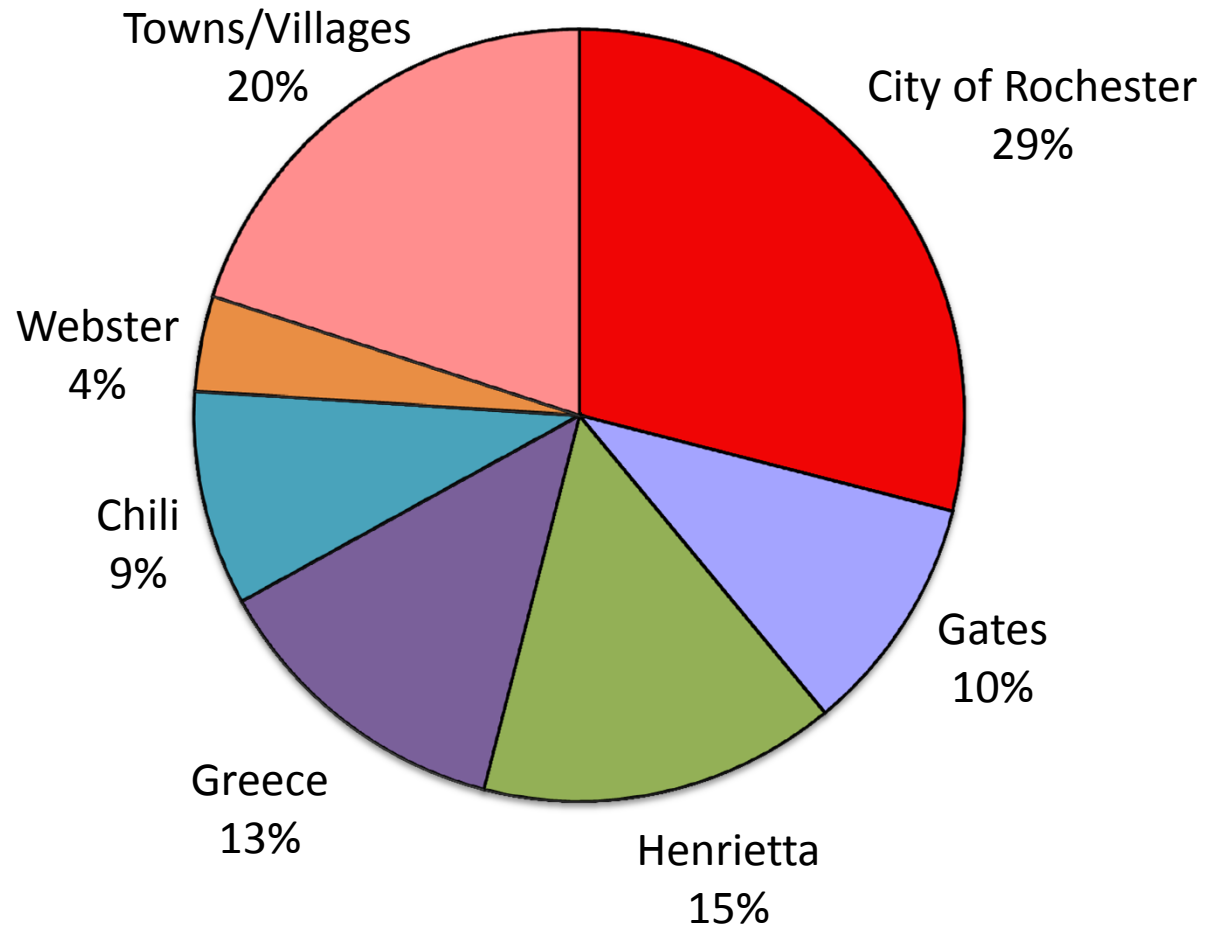
BUSINESS DEVELOPMENT ACTIVITIES

- Business Outreach - 248
- Banker Breakfast
- County Executive Visits
- Newsletters 3,400



PROJECTS

2012 PROJECTS BY MUNICIPALITY





Bryant & Stratton College





**HAMMER
PACKAGING**



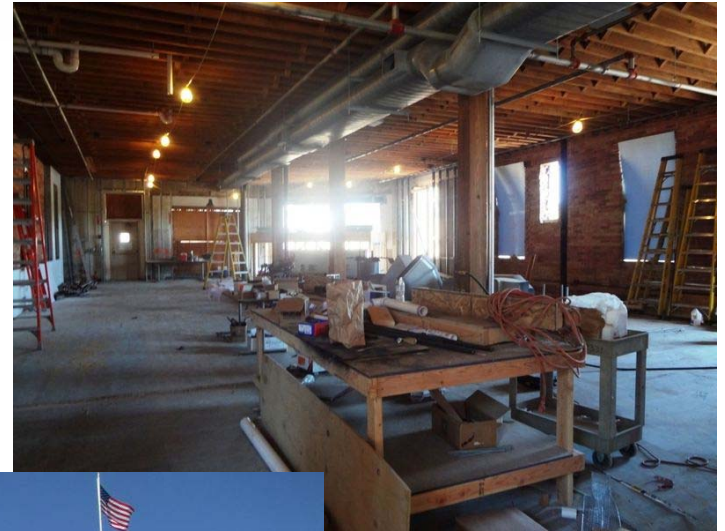
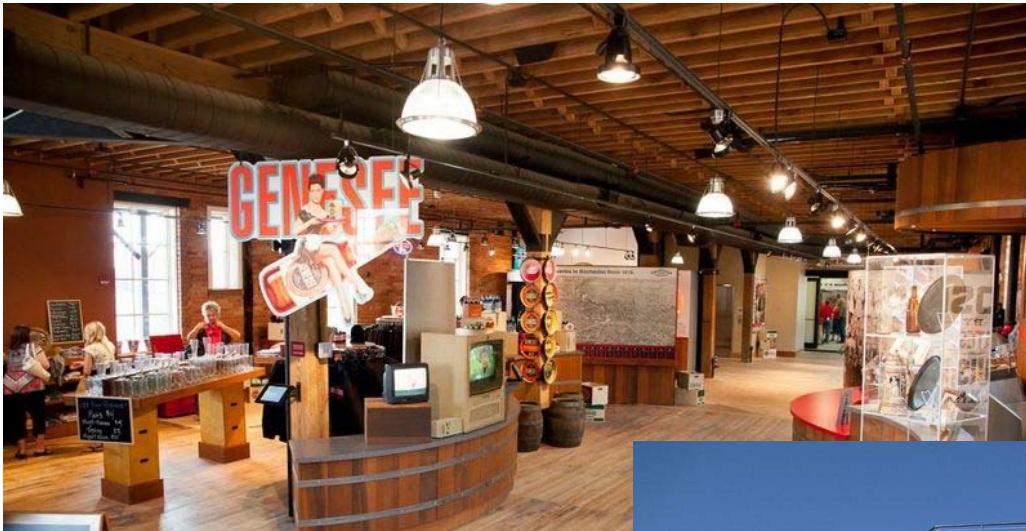




G-S PLASTIC OPTICS
Precision Polymer Optics



NorthAmerican Brewerjes





The Temple Building





YOUR LOCAL PHARMACY

MEDICINES, HEALTH AND BEAUTY CARE



SIGNIFICANT JOB GROWTH



At
Application
55



Total
To Date
389



At
Application
370



Total
To Date
535



At
Application
120



Total
To Date
600

SIGNIFICANT JOB GROWTH



At
Application
58



Total
To Date
258



At
Application
18



Total
To Date
71

COMMUNITY PARTNERSHIPS

COMMUNITY PARTNERSHIPS



COMIDA 1973 - 2013



1973 INFORMATION **40 YEARS**

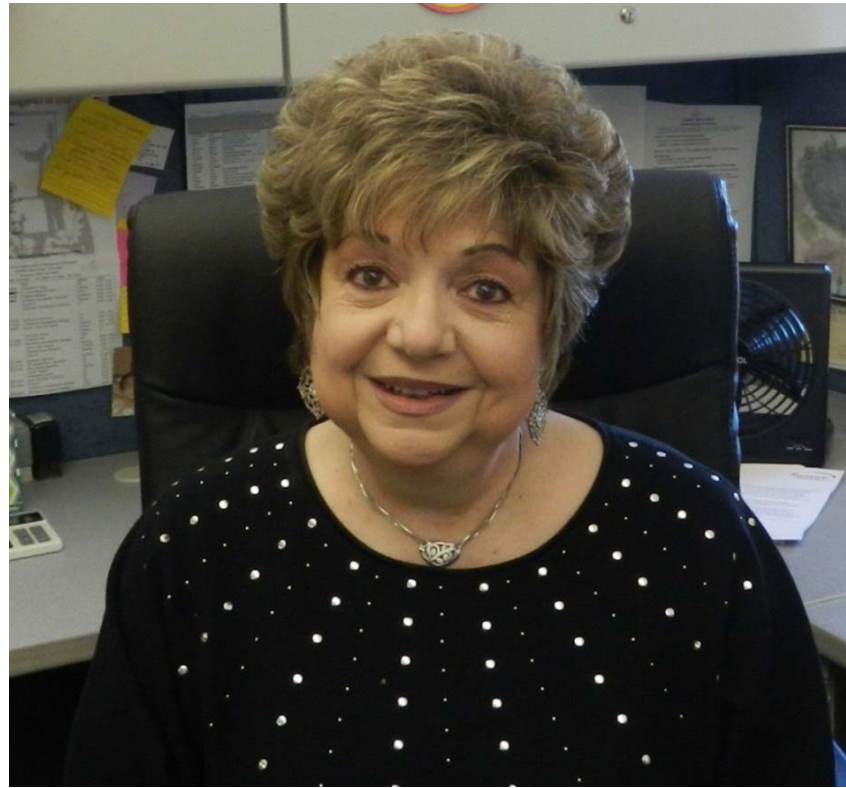
- **PRESIDENT AT THE TIME: RICHARD NIXON**
- **OSCAR WINNING MOVIE: THE GODFATHER**
- **GRAMMY SONG OF THE YEAR: "FIRST TIME EVER I SAW YOUR FACE"**
- **PRICE OF GAS: 40 CENTS**
- **MINIMUM WAGE: \$1.60**

COMIDA 1973 - 2013



- **480 COMIDA MEETINGS**
- **4 COUNTY EXECUTIVES**
- **4 COMIDA EXECUTIVE DIRECTORS**
- **8 COMIDA CHAIR PERSONS**
- **40 COMIDA BUDGETS**
- **40 AUDITS**

COMIDA EMPLOYEE EXTRAORDINAIRE:



ELAINE LIBERTI